

Scannable Office - Microsoft Word

Organization Name: **LESSWORK**

	Y	N
Do you need to collect data of any kind?.....	<input checked="" type="checkbox"/>	<input type="checkbox"/>
Do you need your data collection to be automated?	<input checked="" type="checkbox"/>	<input type="checkbox"/>
Do you need your solution to be efficient and cost-effective?.....	<input checked="" type="checkbox"/>	<input type="checkbox"/>
Do you need flexibility in form creation?.....	<input checked="" type="checkbox"/>	<input type="checkbox"/>
Do you need flexibility in data storage and analysis?.....	<input checked="" type="checkbox"/>	<input type="checkbox"/>

Comments:

I want an easy-to-use automated data collection solution that saves me time & money!

Form Creation

Why use complex form creation tools when you can use a familiar document authoring environment like Microsoft Word? Scannable Office places the tools and objects you need for form design under the Microsoft Word tool bar. This way you can create a scannable form in a work space you know you can trust.

Creating checkmark (OMR), handprint (ICR), machine print (OCR), barcode, and image capture fields is made simple with the AutoData tool bar. The only concern you'll have is how to make the document visually appealing.

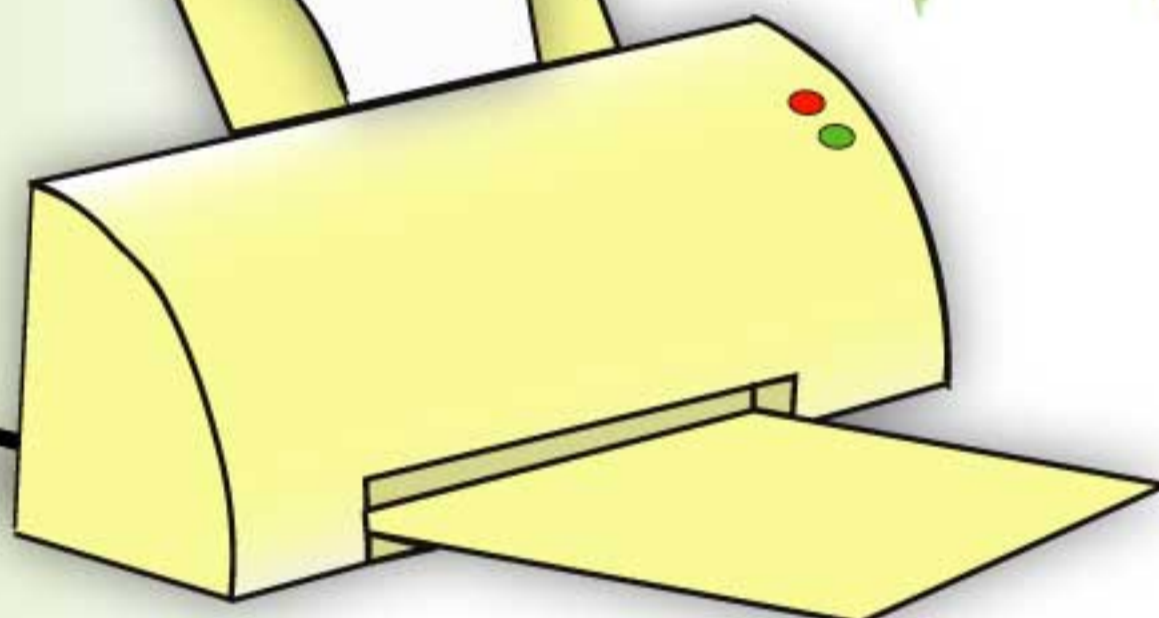
Form Collection

Once the forms you created are collected, it's best to use an automated solution to read the data from the forms. Scannable Office's Form Reader not only reads the data but also processes and verifies it, saving you time and resources. All of the data is stored in your choice of a Microsoft Access, Excel, or any ODBC-compliant database.

AutoData wants to make sure that your solution is as automated as possible. That is why we developed SmartMemory™ technology, which not only aids Form Reader in recognizing characters more easily, but also gives Form Reader the ability to learn different handprinting styles over time.

AutoData understands that you don't always want your data collected all in one table of the database that you specify. There may be times when you want to have one field on your form populate a different table in your database than the next field. For this reason, Scannable Office comes with a utility called Data Mapper, which gives you the power to organize the way you want your data stored when it is read from your forms.

Making Microsoft Office
Scannable



Scannable Office - Microsoft Access Database

Name	Q1	Q2	Q3	Q4	Q5	Comments
LESSWORK	Yes	Yes	Yes	Yes	Yes	C:\ScannableOffice\SurveyResults.tiff

Form Compilation

Once all scanning is complete, it is up to you to analyze the data. You will find all of your data organized as you expected. Use Scannable Office to easily collect the data you need to help your organization thrive!

System Requirements

- PC running Windows XP/Vista/Windows 7
- Microsoft Word 2003/2007/2010
- 800 MHz processor
- 512 MB memory
- 50 MB of available disk space
- CD-ROM drive for installation
- Open USB Port (required for AutoData key)
- Inkjet or laser printer
- TWAIN compatible scanner with automatic document feeder