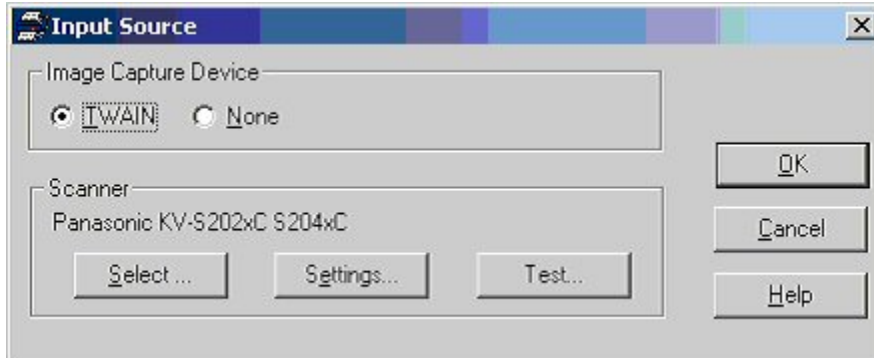


Post-Update Settings for Panasonic Scanners

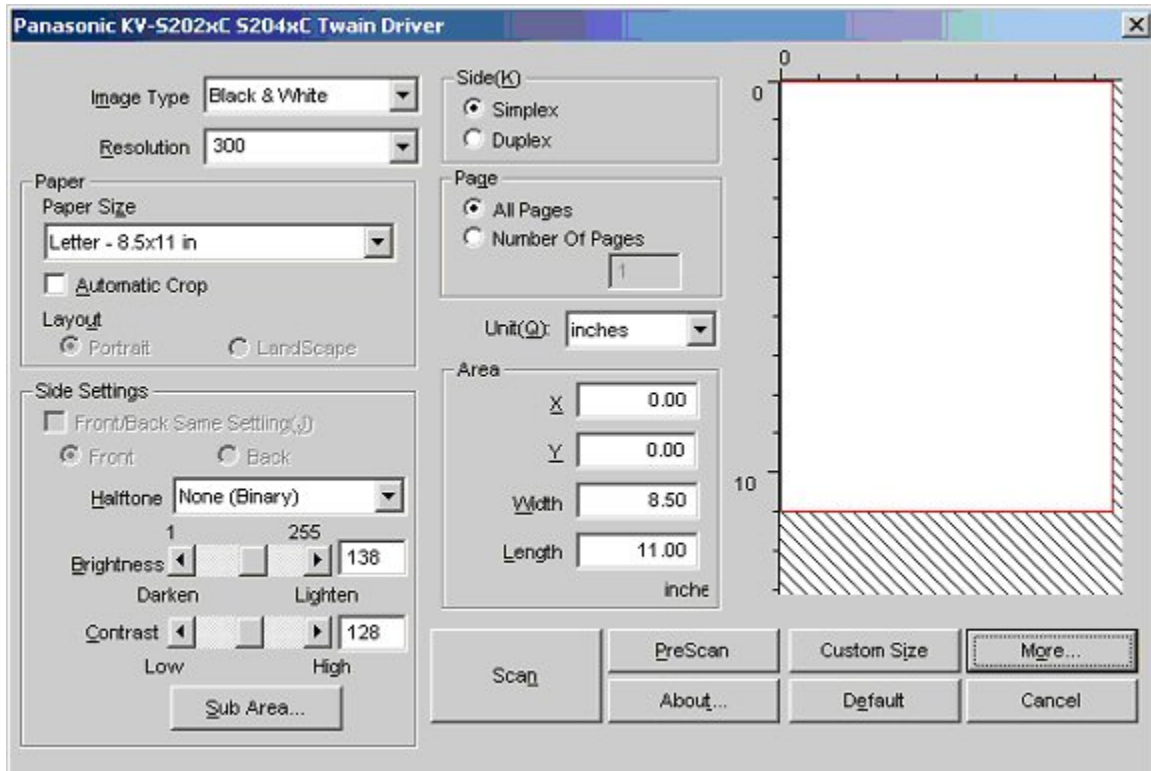
Change Scanner Settings after Software Update to Ensure Problem-Free Scanning

If you use a Panasonic scanner with an AutoData product, there are a couple of scanner settings that you must change manually to ensure that your images can be processed.

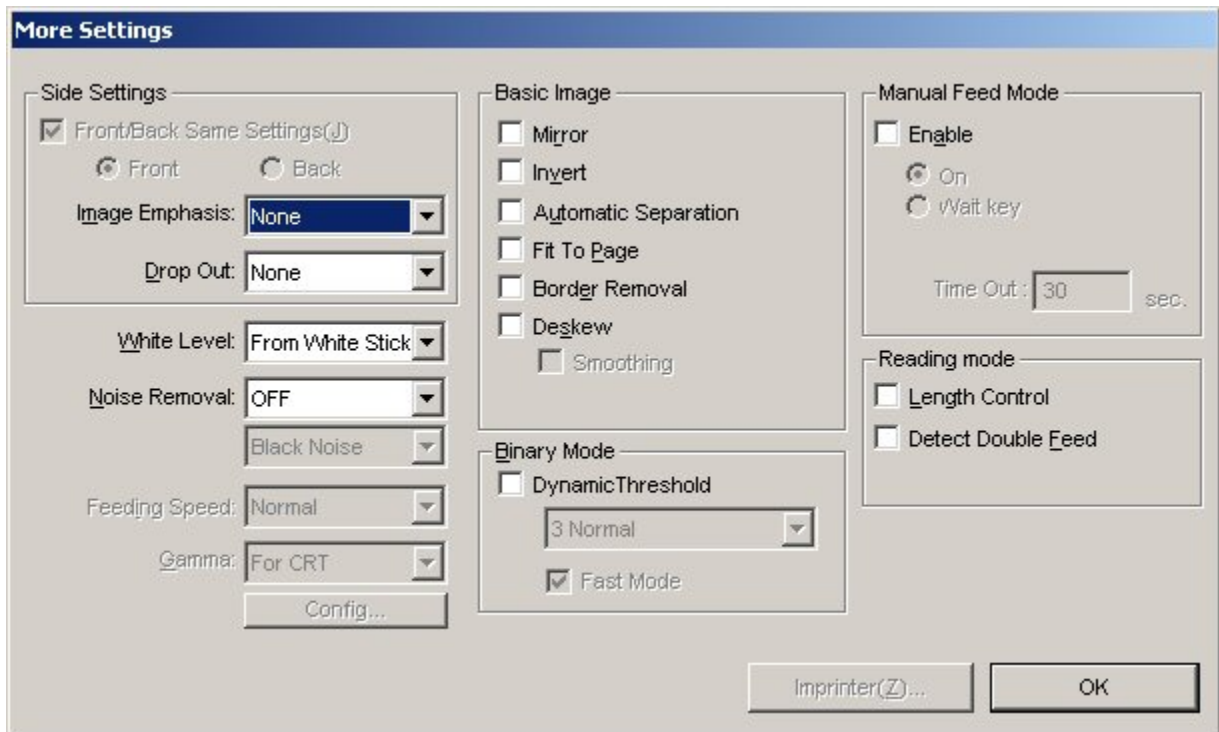
Choose **Input Source** from the **Process** menu.



From the **Input Source Dialog Box**, click the **Test** button.



From the **TWAIN DataSource Dialog Box** click the **More** button. (Your dialog box may look slightly different depending upon your scanner model.)



Set the Image Emphasis to None.

Set the White Level to From White Stick.

Click OK to close the dialog box and return to the **TWAIN DataSource Dialog Box**.

Place a piece of paper in the scanner ADF. Click **Scan** to save the settings and close the dialog box. Your settings have now been updated.